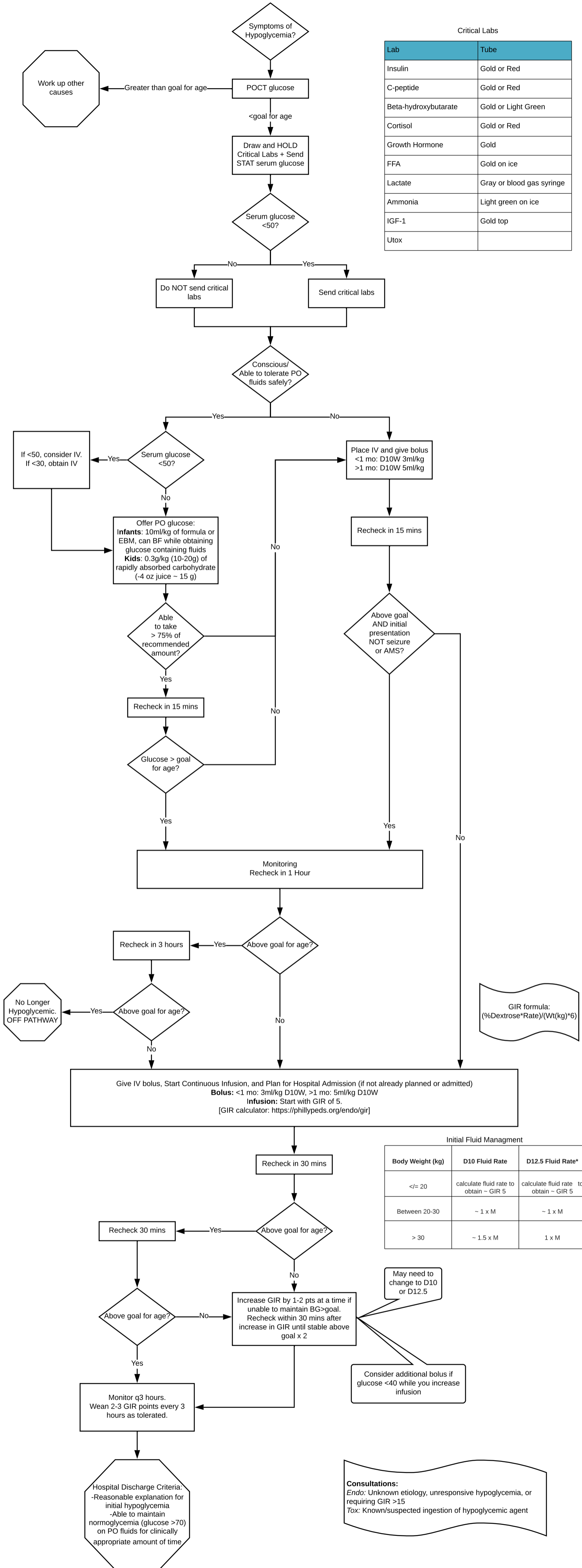


Pediatric Hypoglycemia: Diagnosis and Management

Critical Labs

Lab	Tube
Insulin	Gold or Red
C-peptide	Gold or Red
Beta-hydroxybutyrate	Gold or Light Green
Cortisol	Gold or Red
Growth Hormone	Gold
FFA	Gold on ice
Lactate	Gray or blood gas syringe
Ammonia	Light green on ice
IGF-1	Gold top
Utox	



GIR formula:

$$\frac{(\%Dextrose \times Rate)}{Wt(kg) \times 6}$$

Initial Fluid Management

Body Weight (kg)	D10 Fluid Rate	D12.5 Fluid Rate*
≤ 20	calculate fluid rate to obtain ~ GIR 5	calculate fluid rate to obtain ~ GIR 5
Between 20-30	~ 1 x M	~ 1 x M
> 30	~ 1.5 x M	1 x M

May need to change to D10 or D12.5

Consider additional bolus if glucose <40 while you increase infusion

Consultations:
 Endo: Unknown etiology, unresponsive hypoglycemia, or requiring GIR >15
 Tox: Known/suspected ingestion of hypoglycemic agent

Hospital Discharge Criteria:
 -Reasonable explanation for initial hypoglycemia
 -Able to maintain normoglycemia (glucose >70) on PO fluids for clinically appropriate amount of time