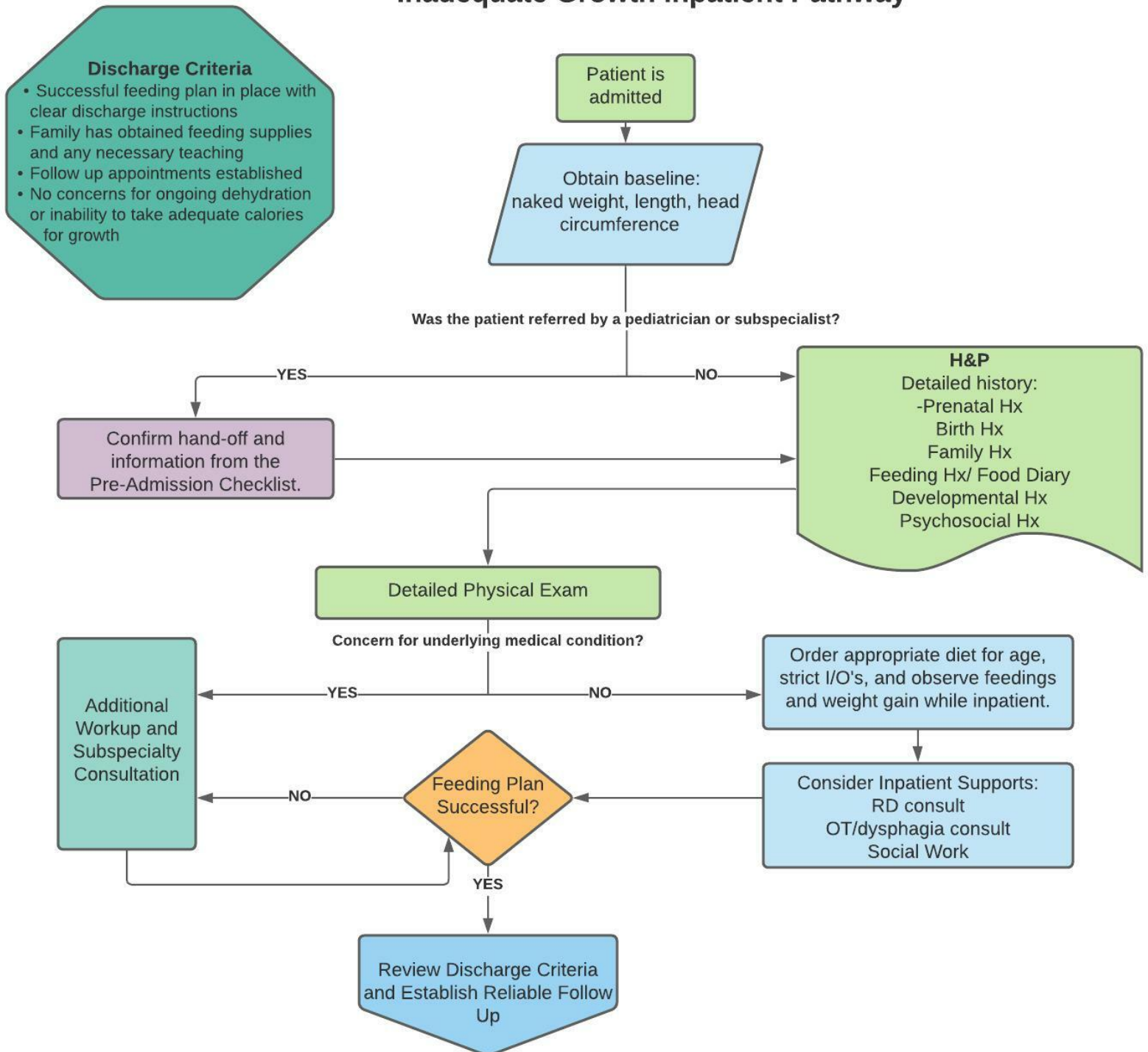


APPENDIX 2: INADEQUATE GROWTH INPATIENT PATHWAY

Inadequate Growth Inpatient Pathway



Northern California Pediatric Hospital Medicine Consortium. Originated 06/2019.

Approved by UCSF Pharmacy and Therapeutics Committee: 09/2021

This work is licensed under a Creative Commons Attribution-Non-Commercial 4.0 International License